



CROWTHORNE MUSICAL PLAYERS



THE  
WITCHES  
OF  
EASTWICK



WILDE THEATRE  
SOUTH HILL PARK ARTS CENTRE, BRACKNELL

11 - 15 MARCH 2014



[WWW.CMP-BERKS.ORG.UK](http://WWW.CMP-BERKS.ORG.UK)

CROWTHORNE MUSICAL PLAYERS

PRESENTS

# The Witches of Eastwick

MUSIC BY DANA P. ROWE  
BOOK & LYRICS BY JOHN DEMPSEY

BASED ON THE NOVEL BY JOHN UPDIKE  
AND THE WARNER BROS. MOTION PICTURE

AN AMATEUR PRODUCTION BY ARRANGEMENT WITH  
JOSEF WEINBERGER LTD.

DIRECTOR: MARK CONOLLY  
MUSICAL DIRECTOR: RICHARD STOCKTON  
CHOREOGRAPHER: ERIN HOPE PHARO  
LIGHTING DESIGNER: MICHAEL BRENKLEY

*noda*

Professional support for amateur theatre

CMP IS AFFILIATED TO THE NATIONAL OPERATIC AND DRAMATIC ASSOCIATION



shp

IT IS MY HEARTFELT PLEASURE TO WELCOME YOU TO CMP'S PRODUCTION OF WITCHES OF EASTWICK. I AM DELIGHTED TO WELCOME BACK MARK CONOLLY AS DIRECTOR, AND ERIN HOPE PHARO AS CHOREOGRAPHER, AND TO INTRODUCE DICK STOCKTON AS MUSICAL DIRECTOR. I AM SURE YOU WILL AGREE WE HAVE ASSEMBLED A WONDERFUL CAST FOR THE SHOW, INCLUDING SEVERAL NEW MEMBERS. REHEARSALS HAVE BEEN LOTS OF FUN, ALBEIT CONDENSED INTO A SHORTER TIMEFRAME THAN USUAL AS THE SOCIETY HAS MOVED FORWARD ITS PRODUCTION DATES FROM MAY TO MARCH. SIT BACK AND RELAX. WE HOPE YOU ENJOY THE SHOW AND LOOK FORWARD TO SEEING YOU AT FUTURE EVENTS.

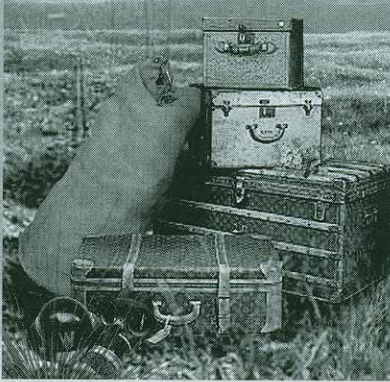
CHRIS WOOD - CHAIRMAN

UPCOMING SHOWS

Crowthorne Musical Players Present

# .PACK UP YOUR TROUBLES

12<sup>th</sup> & 13<sup>th</sup> September 2014  
Morgan Centre, Crowthorne



10 - 14 March 2015

CMP Presents



# The Addams Family

A NEW MUSICAL COMEDY

UPCOMING SHOWS

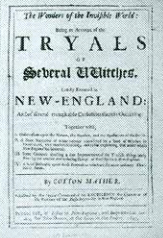
## WITCHES IN NEW ENGLAND

THE ASSOCIATION OF WITCHES AND NEW ENGLAND GOES BACK A LONG TIME, TO 1692 TO BE PRECISE. BETWEEN FEBRUARY 1692 AND MAY 1693, THE WELL-KNOWN SALEM WITCH TRIALS PLAGUED THE CITIZENS OF THE AREA AROUND SALEM, MASSACHUSETTS.

NUMEROUS "WITCHES" WERE REPORTED BY NEIGHBOURS AND A SERIES OF TRIALS RESULTED IN MANY BEING BROUGHT TO TRIAL AND FOUND GUILTY OF DIABOLICAL OFFENCES. SOME WERE EXECUTED BY HANGING OR



PRESSING TO DEATH, WHILST OTHERS LANGUISHED AND EVENTUALLY DIED IN JAIL FROM COLD AND MALNUTRITION. IT IS NOT KNOWN FOR SURE WHAT LED TO THIS SPATE OF PERSECUTIONS AND TRIALS, BUT SUGGESTIONS RANGE FROM MASS HYSTERIA, THROUGH ERGOTAMINE POISONING (FROM CONTAMINATED RYE BREAD) TO VINDICTIVENESS AND A NEED FOR ATTENTION. WHATEVER THE REASON, IT WAS THANKFULLY FAIRLY SHORT-LIVED.



JOHN UPDIKE'S MORE MODERN NEW ENGLAND WITCHES ARE RATHER DIFFERENT. ACQUIRING THEIR POWERS AFTER BREAKUPS OF THEIR MARRIAGES, THEY PRACTICE THEIR MAGIC ON A SMALL SCALE UNTIL THE ARRIVAL OF THE DEVIL-LIKE CHARACTER, DARRYL VAN HORNE. A CONSTANT WARRING WITH THE STRAIT-LACED, PRESBYTERIAN COMMUNITY OF EASTWICK, WHICH SEES ITSELF AS LOCAL GUARDIAN OF MORALS ENSUES AND IN THE BOOK, DARRYL EVENTUALLY SNUBS THE WITCHES BY MARRYING JENNY AND THEN RUNNING OFF WITH HER BROTHER CHRIS. THUS, LEAVING THE TOWN IN TURMOIL - THE STAGE VERSION IS SOMEWHAT DIFFERENT, AS YOU WILL SEE.



CROWTHORNE MUSICAL PLAYERS, WITCHES OF EASTWICK, MARCH 2014

*FROM LEFT TO RIGHT IN NOSE ORDER:*

PETER WINN, SUE FORD, JANET WINN, MALCOLM WINSLADE, LYNN CLEGG, AMY WILLIAMS, SUE DYER, CHRIS WOOD, ROGER LANSDOWN, SHARNE GOULDING, ERIN HOPE PHARO, JUSTIN FERRINGTON, TONY COLLINS, HELEN HALLMEY, HELEN NICHOLSON, CHRISSEY PASK, TASHA EDEN, ALI BAGSHAW, SIMON LIGHT, CATHERINE HAZELL, LIZ CENCL, AMANDA WHEWELL, SARAH BOUCHE DE VITRAY, DAVE COLLIER, CAT HILL, NYCK MOORE, DAVID ALLEN, REBECCA ROGERS, DAMIAN THOMAS, KATE LIGHT, LAURA HARTLEY, MORRISON THOMAS, SUE PRIOR  
NOT PICTURED: DEBBIE MANN

# PRODUCTION TEAM

---

DIRECTOR	MARK CONOLLY
MUSICAL DIRECTOR	RICHARD STOCKTON
CHOREOGRAPHER	ERIN HOPE PHARO
STAGE MANAGER	IAN ROBERTSON
DEPUTY STAGE MANAGER	DUNCAN BRUCE
LIGHTING DESIGNER	MICHAEL BRENKLEY
LIGHTING OPERATOR	BECCY WIRE
SOUND	TOM HORROX
PRODUCTION MANAGER	JANET WINN
STAGE CREW	CHRIS EVANS, BILL FOX, ANDY SPRINGFORD, BOB SWANN
PHOTOGRAPHY	TIM BASTOCK
PROPERTIES	PETER WINN
SCENERY	SCENIC PROJECTSLTD.
COSTUME DESIGN AND WARDROBE	JANET WINN
MAKE UP	LINDA PEACOCK
FRONT OF HOUSE ORGANISER	TONY KERSHAW
POSTER & BANNER DESIGNS	JOHN CALEY
PUBLICITY	CHRISSY PASK, NYCK MOORE, CAT HAZELL
PROGRAMME	DAVID ALLEN
TICKETS	SUE FORD
ADMINISTRATION/BOOKINGS	SIMON LIGHT

THE CMP CAST AND COMMITTEE WOULD ALSO LIKE TO THANK SOUTH EAST BERKS GANG SHOW, JANE WATERS, KATY LETHBRIDGE, KIRSTIN PETTET, MAXINE ROBINSON AND SYNGENTA FOR THEIR HELP PUTTING THIS SHOW TOGETHER.

# ORCHESTRA

---

REEDS	MARTYN HAYWARD PAUL SUMMERS
TRUMPET	LAWRENCE WARBURTON
TROMBONE	PAUL DODGE
GUITAR	DAVE YATES
BASS	JONATHAN WILLIAMS
KEYBOARDS	DAVID PERKINS MARK WEBB
PERCUSSION	DEREK VICKERS

# THE CAST

DARRYL VAN HORNE  
ALEXANDRA SPOFFORD  
JANE SMART  
SUKIE ROUGEMOUNT  
FELICIA GABRIEL  
JENNIFER GABRIEL  
MICHAEL SPOFFORD  
CLYDE GABRIEL  
LITTLE GIRL  
FIDEL  
GINA MARINO  
BRENDA PARSLEY  
GRETA NEFF  
JOE MARINO  
RAYMOND NEFF  
ED PARSLEY  
REBECCA  
MARGE PERLY

ALI BAGSHAW  
LAURA HARTLEY  
CATHERINE HAZELL  
SUE PRIOR  
LYNN CLEGG  
REBECCA ROGERS  
DAVID ALLEN  
TONY COLLINS  
KATE LIGHT  
MORRISON THOMAS  
HELEN HALLMEY  
CAT HILL  
DEBBIE MANN  
DAMIAN THOMAS  
PETER WINN  
DAVE COLLIER  
SARAH BOUCHE DE VITRAY  
HELEN NICHOLSON

## DANCERS -

TASHA EDEN,  
ERIN HOPE PHARO,  
AMANDA WHEWELL,  
AMY WILLIAMS

## CHORUS -

LIZ CENCI  
JUSTIN FERRINGTON  
SHARNE GOULDING  
SIMON LIGHT  
CHRISSY PASK  
JANET WINN

SUE DYER  
SUE FORD  
ROGER LANSDOWN  
NYCK MOORE  
MALCOLM WINSLADE  
CHRIS WOOD

# SCENES AND MUSICAL NUMBERS

## ACT ONE

### SCENE ONE - THE BAY

OVERTURE

EASTWICK KNOWS - LITTLE GIRL, WITCHES & TOWNSPEOPLE

### SCENE TWO - ALEXANDRA'S DEN

MAKE HIM MINE - ALEX, JANE & SUKIE

### SCENE THREE - FELICIA'S GREAT ROOM

EASTWICK KNOWS (REPRISE) - LITTLE GIRL

### SCENE FOUR - THE CHURCH BASEMENT

DARRYL VAN HORNE - DARRYL & TOWNSPEOPLE

### SCENE FIVE - JANE'S LIVING ROOM

WAITING FOR THE MUSIC TO BEGIN - JANE & DARRYL

### SCENE SIX - SUKIE'S PORCH AND PARLOUR

WORDS, WORDS, WORDS - SUKIE & DARRYL

### SCENE SEVEN - ALEXANDRA'S STUDIO

YOUR WILDEST DREAMS - ALEX & DARRYL

### SCENE EIGHT - THE TENNIS COURT

### SCENE NINE - A GRASSY BLUFF

SOMETHING - MICHAEL & JENNIFER

### SCENE TEN - THE BACK-YARDS OF EASTWICK

DIRTY LAUNDRY - TOWNSPEOPLE

### SCENE ELEVEN - THE LENOX HOUSE

I WISH I MAY - ALEX, JANE, SUKIE & DARRYL

## ACT TWO

### SCENE ONE - ALEXANDRA/JANE/SUKIE'S HOUSES

ANOTHER NIGHT AT DARRYL'S - ALEXANDRA, JANE & SUKIE

### SCENE TWO - NEMO'S DINER

DANCE WITH THE DEVIL - DARRYL, MICHAEL AND TOWNSPEOPLE

### SCENE THREE - THE STREETS OF EASTWICK/THE LENOX HOUSE

ANOTHER NIGHT AT DARRYL'S (REPRISE) - LITTLE GIRL, ALEXANDRA, JANE & SUKIE

### SCENE FOUR - FELICIA'S GREAT ROOM

EVIL - FELICIA

### SCENE FIVE - THE BEDROOMS OF EASTWICK

DIRTY LAUNDRY (REPRISE) - TOWNSPEOPLE

### SCENE SIX - THE LENOX HOUSE

WAITING FOR THE MUSIC TO BEGIN (REPRISE) - JANE

THREE LITTLE LADIES - DARRYL

### SCENE SEVEN - A SEA-SIDE GRAVEYARD

WORDS, WORDS, WORDS (REPRISE) - SUKIE

### SCENE EIGHT - DOCK STREET

DARRYL VAN HORNE (REPRISE) - DARRYL, JENNIFER AND TOWNSPEOPLE

BEYOND YOUR WILDEST DREAMS (REPRISE) - TOWNSPEOPLE

I WISH I MAY (REPRISE) - JENNIFER

### SCENE NINE - THE CHURCH

THE WEDDING - WITCHES, DARRYL & TOWNSPEOPLE

ACT TWO: FINALE - ALEX, JANE & SUKIE

## CAST PROFILES

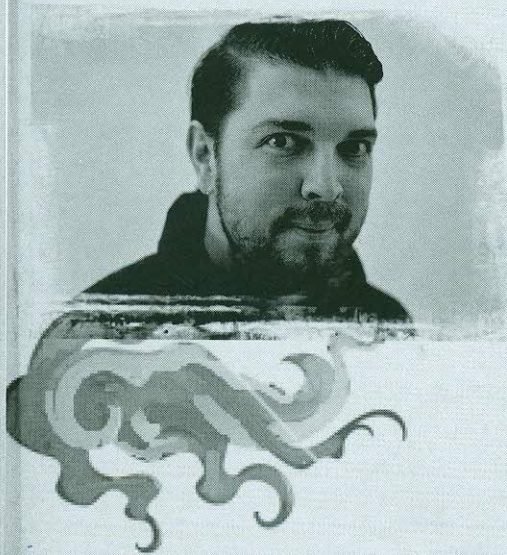
### DARRYL VAN HORNE – ALI BAGSHAW

AFTER HIS FIRST SHOW WITH CMP AS "MOTEL" IN FIDDLER ON THE ROOF, ALI IS DELIGHTED TO HAVE THE HONOUR OF PLAYING SUCH AN EXCITING AND CHALLENGING ROLE WITH SUCH A FRIENDLY SOCIETY.

HAVING PLAYED A FEW MINOR ROLES IN SCHOOL PRODUCTIONS, ALI REDISCOVERED HIS LOVE FOR MUSICAL THEATRE IN 2007 BY JOINING WOODLEY LIGHT OPERATIC SOCIETY WHERE HIS ROLES HAVE INCLUDED DEXTER HAVEN IN *HIGH SOCIETY*, NATHAN DETROIT IN *GUYS AND DOLLS*, STREPHON IN *IOLANTHE* AND FREDERICK IN *PIRATES OF PENZANCE*. HE HAS ALSO PLAYED ALEXIS IN *THE SORCERER* WITH THE SAVOY SINGERS.

WHEN THE ACTING AND DANCING BECOME TOO MUCH, ALI SINGS WITH THE CLIVE FORTUNE BIG BAND, PERFORMING SWING AND "RAT PACK" NUMBERS, PREDOMINANTLY AT CHARITY FUNCTIONS IN NORTH HAMPSHIRE AND BERKSHIRE.

THERE HAVE BEEN MANY JOKES ABOUT ALI NOT HAVING TO ACT TOO HARD TO ACHIEVE THE PERSONALITY OF DARRYL VAN HORNE. IN FACT, THE EXPRESSION "TYPE-CAST" HAS DEFINITELY BEEN USED! BUT IN TRUTH, THIS HAS BEEN THE BIGGEST CHALLENGE ALI HAS TAKEN IN A ROLE AND IT HAS BEEN AN AMAZING EXPERIENCE TO EMBRACE IT WITH BOTH HANDS.



### ALEXANDRA SPOFFORD – LAURA HARTLEY

LAURA IS NO STRANGER TO SOUTH HILL PARK WHERE SHE RECENTLY PLAYED POLLY IN *FAWLTY TOWERS*, MISS SPIDER IN *JAMES AND THE GIANT PEACH* AND A WHALER IN *MOBY DICK*, CELEBRATING SOUTH HILL PARKS 40TH ANNIVERSARY. LAURA ALSO PLAYED MAID MARION IN THE *ROBIN HOOD PANTO*, CLEA IN *BLACK COMEDY* AND SANG FOR ITALY & HUNGARY IN *EUROBEAT* AT THE SHINFIELD PLAYERS. THIS IS LAURA'S FIRST TIME EVER PERFORMING IN A MUSICAL AND FIRST SHOW WITH CMP WHERE SHE HAS LEARNT SO MUCH FROM THE TALENTED TEAM AND HAS THOROUGHLY ENJOYED SINGING WITH HER FELLOW WITCHES.



### JANE SMART – CATHERINE HAZELL

AFTER 10 YEARS OF BEING IN A LOCAL VARIETY CLUB PERFORMING IN VARIETY SHOWS AND PANTOMIMES, CATHERINE IS THRILLED TO BE PLAYING STUFFY CELLIST JANE SMART AT THE WILDE. SHE JOINED CMP 2 YEARS AGO STARTING IN THE CHORUS OF *HELLO DOLLY!* THEN SHE PLAYED TZEITEL IN *FIDDLER ON THE ROOF*. OF WITCHES SHE SAYS "THIS IS THE BIGGEST THING I HAVE EVER DONE AND I'M ABSOLUTELY TERRIFIED! I LOVE THE WAY THE CHARACTERS OF THE WITCHES CHANGE OVER THE COURSE OF THE SHOW; IT'S A BIT OF A BELL-CURVE. TRYING TO PULL OFF THAT WHILE REMAINING AS 'JANE' DEEP DOWN WILL BE AN EXCITING CHALLENGE."





## SUKIE ROUGEMOUNT – SUE PRIOR

SUE IS DELIGHTED TO BE PERFORMING WITH CMP AGAIN. IN 2012 SHE PLAYED DOLLY IN *HELLO DOLLY!* (FOR WHICH SHE WAS NOMINATED FOR A NODA AWARD) AFTER A BREAK FROM THE GROUP OF A NUMBER OF YEARS, PRIOR TO THIS, HER ROLES WITH CMP INCLUDED ELIZA IN *MY FAIR LADY* AND JULIE IN *CAROUSEL*. IN THE MEAN TIME, SUE HAS BEEN PERFORMING WITH VARIOUS OTHER GROUPS AND HAS RECENTLY PLAYED RENO SWEENEY IN *ANYTHING GOES* DOROTHY BROCK IN *42ND STREET* AND THE RATHER "DITZY" CHARACTER OF SALLY IN *FOLLIES*. AMONGST OTHERS, SUE HAS ENJOYED THE PARTS OF, SARAH (*BITTER SWEET*), KATE (AND BIANCA) (*KISS ME KATE*), FLORENCE (*CHES*), JOAN (*STRIKE UP THE BAND*), TRACEY (*HIGH SOCIETY*), CALAMITY JANE AND VARIOUS OTHER LEAD ROLES IN OPERAS AND OPERETTAS. AS WELL AS BEING A SOLICITOR AND ADMINISTRATOR OF AN U11S FOOTBALL TEAM, SUE IS MUM OF ADAM AND NIC AND MARRIED TO THE MUSICAL DIRECTOR - WHOM SHE MET IN 1993 WHEN DOING HER FIRST SHOW WITH CMP!



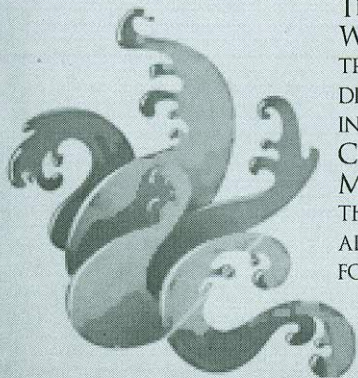
## FELICIA GABRIEL – LYNN CLEGG

THE WITCHES OF EASTWICK IS ONE OF LYNN'S FAVOURITE SHOWS AND WILL BE THE ONLY SHOW SHE HAS DONE TWICE IN 24 YEARS OF PERFORMING ON THE AMATEUR STAGE. JUST OVER SIX YEARS AGO LYNN PLAYED THE PART OF ALEX SPOFFORD WITH CAMUS PRODUCTIONS IN CAMBERLEY AND LOVED EVERY MINUTE OF IT (DESPITE THE FLYING). GETTING THE OPPORTUNITY TO PLAY THE PART OF FELICIA GABRIEL WAS THEREFORE TOO GOOD AN OPPORTUNITY TO MISS. NOW THAT SHE IS AT THAT 'DIFFICULT AGE' SHE SEEMS TO HAVE GRADUATED TO PLAYING MORE 'MATURE' CHARACTERS. MOST RECENTLY SHE PLAYED AUNT ELLA IN *OKLAHOMA!* AGAIN WITH CAMUS PRODUCTIONS BUT HAS PLAYED EVERYTHING FROM MAVIS IN 'STEPPING OUT' TO SVETLANA IN 'CHES', GLADYS IN 'THE PAJAMA GAME' TO HOPE HARCOURT IN 'ANYTHING GOES'. IN ADDITION TO PERFORMING LYNN HAS ALSO BEEN KNOWN TO CHOREOGRAPH THE ODD SHOW OR TWO.



## CLYDE GABRIEL – TONY COLLINS

THIS IS TONY'S 2ND SHOW WITH CMP HAVING PLAYED LAZAR WOLF IN *FIDDLER ON THE ROOF* LAST YEAR. TONY HAS BEEN TREADING THE BOARDS FOR ABOUT 55 YEARS PLAYING MANY DIFFERENT ROLES. FROM SHAKESPEARE TO DAME, DADDY WARBUCKS IN *ANNIE*, CAPT HOOK IN *PETER PAN* AND A BUTLER IN *AGATHA CHRISTIE*. ALSO TONY HAS MANNED THE BARRICADES IN *LES MISERABLES*, JUGGLED AND PERFORMED MAGIC IN *BARNUM* ALL ON THE WEST END STAGE. LOOK OUT FOR TONY IN SEVERAL TV ADVERTS (MOSTLY MAN AT BACK WITH HAT!) TONY IS LOOKING FORWARD TO APPEARING IN *WITCHES OF EASTWICK*.



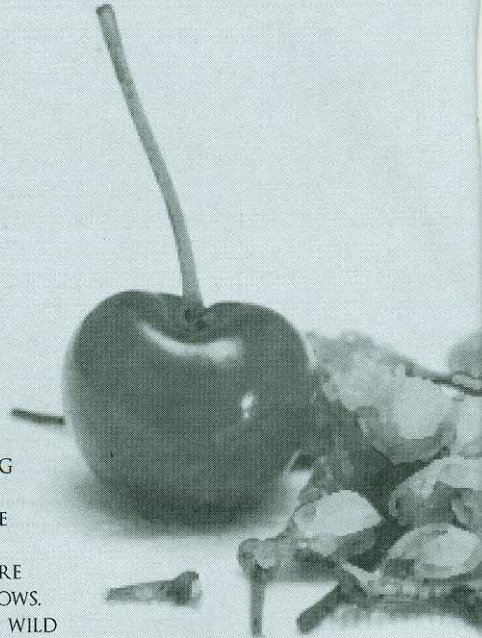
## JENNIFER GABRIEL – REBECCA ROGERS

CURRENTLY IN HER FINAL YEAR OF 'A' LEVELS REBECCA HAS BEEN PASSIONATE ABOUT MUSICAL THEATRE FROM AN EARLY AGE AND IS DELIGHTED TO BE PERFORMING FOR THE FIRST TIME WITH CMP. PREVIOUSLY WITH CAMUS SHE ENJOYED PLAYING THE PRINCIPAL ROLES OF LAUREY IN 'OKLAHOMA' AND LIESL IN 'THE SOUND OF MUSIC'. WITH CFAOS SHE PERFORMED IN 'FIDDLER ON THE ROOF', 'ANNIE', 'ANNIE GET YOUR GUN' AND 'THE KING AND I'. REBECCA PERFORMS REGULARLY AS A MEMBER OF THE NATIONAL YOUTH MUSICAL THEATRE COMPANY UK. HER MOST RECENT PROJECT WAS A MUSICAL ADAPTATION OF SHAKESPEARE'S 'MACBETH' AT THE WILDE THEATRE IN BRACKNELL, SET TO TOUR THE UK. FOLLOWING HER PERFORMANCE AS THE 'MAD GARDENER' IN 'JABBERWOCKY' AT THE BARBICAN THEATRE PLYMOUTH, REBECCA WAS SELECTED TO PERFORM ALONGSIDE SOME LEADING WEST END NAMES AT A CHARITY GALA EVENT AT THE INSTITUTE OF DIRECTORS IN PALL MALL LONDON. REBECCA HAD GREAT FUN PERFORMING 'EDEN' THE MUSICAL WITH 'GUILDFORD SCHOOL OF ACTING' AND WITH 'FARNHAM YOUTH CHOIR' APPEARED ON ITV IN 'CAROL'S AT CHRISTMAS'. WAS A FINALIST IN THE BBC CHOIR OF THE YEAR COMPETITION, TOURED ANNUALLY WINNING CHORAL COMPETITIONS IN VERONA, MONTREUX, AND REPRESENTED GB AT THE WORLD CHOIR OLYMPICS IN CINCINNATI WINNING GOLD AND SILVER MEDALS.



## MICHAEL SPOFFORD – DAVID ALLEN

THIS IS DAVID'S FIRST SHOW WITH CMP. HE HAS ENJOYED BEING INVOLVED WITH WITCHES AND BEING PART OF CMP. DAVID WAS IN A MUSICAL THEATRE SOCIETY WHILE AT UNI WHERE HE PERFORMED IN A NUMBER OF SHOWS, INCLUDING RAPUNZEL'S PRINCE IN INTO THE WOODS, THOUGH IS MORE USED TO BEING BACKSTAGE, IN THE PRODUCTION TEAM FOR SHOWS. DAVID IS LOOKING FORWARD TO PLAYING 'INNOCENCE WITH A WILD EDGE' MICHAEL SPOFFORD AS HE HOPES IT WILL BE LESS STRESSFUL THAN BEING IN THE BACKSTAGE CREW (TO WHOM HE GIVES HIS THANKS AND APOLOGIES AS A MEMBER OF THE CAST).



## LITTLE GIRL – KATE LIGHT

KATE IS BACK WITH CMP FOR A SECOND YEAR, HAVING APPEARED IN LAST YEAR'S PRODUCTION OF FIDDLER ON THE ROOF. "I AM EXCITED TO BE BACK DOING MY SECOND SHOW WITH CMP. I HAVE REALLY ENJOYED BEING PART OF THE GROUP AGAIN, AND I LOOK FORWARD TO DOING MORE SHOWS IN THE FUTURE". KATE IS IN YEAR 11 AT GARTH HILL COLLEGE, AND WILL BE DOING HER GCSE'S LATER IN THE SUMMER. KATE LIKES TO BE BUSY, AND WILL BE PERFORMING AT THE WILDE AGAIN THE SATURDAY AFTER WITCHES FINISHES AS PART OF THE LIFT OFF DANCE FESTIVAL. KATE DOES BALLET AT THE ALLIED SCHOOLS OF DANCE AND WILL BE TAKING PART IN THEIR BI-ANNUAL SHOW, AGAIN AT THE WILDE THEATRE, ON THE 4<sup>TH</sup> AND 5<sup>TH</sup> MAY. AND THEN SHE'LL BE BACK FOR THE FOURTH SHOW IN 11 WEEKS PERFORMING WITH THE BERKSHIRE ARTS ACADEMY (BARTA) PRODUCTION OF BUGSY.

## GINA & JOE MARINO - HELEN HALLMEY & DAMIAN THOMAS



WITCHES IS HELEN'S SECOND SHOW WITH CMP, JOINING LAST YEAR FOR FIDDLER ON THE ROOF. HAVING BEEN PART OF SEVERAL CHOIRS AND PANTOS AS A TEENAGER, THIS MARKED A RETURN AFTER SEVERAL YEARS AWAY FROM THE STAGE. SHE HAS PERFORMED SOLOS IN BOTH THE AUTUMN SHOW AND THE CHRISTMAS CAROL CONCERT, AND IS LOOKING FORWARD TO BEING PART OF THE MAIN SHOW ONCE AGAIN.

THIS IS DAMIAN'S FOURTH PRODUCTION WITH CMP HAVING PREVIOUSLY PLAYED BARNABY IN HELLO, DOLLY!, SASCHA/BOTTLE DANCER IN FIDDLER ON THE ROOF AND APPEARING IN THE ENSEMBLE OF GUYS AND DOLLS. CREDITS INCLUDE: MICHAL (THE PILLOWMAN), EDESEL

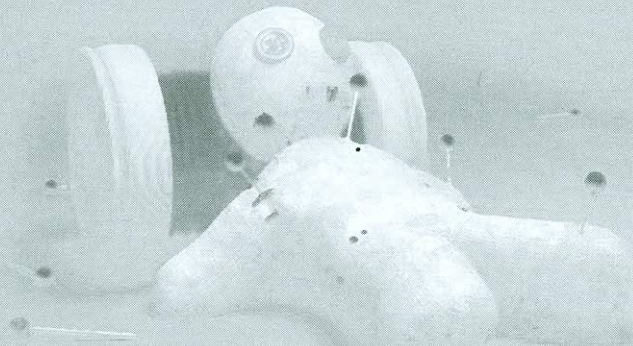
(BEST LITTLE WHOREHOUSE IN TEXAS), JON (TICK, TICK... BOOM - NODA AWARD NOMINATED), MARCO (THE GONDOLIERS), STEWARD (INTO THE WOODS), MAX (THE SOUND OF MUSIC), MARK (RENT), ANATOLY (CHESS), SEYMOUR (LITTLE SHOP OF HORRORS), MERRIMAN (IMPORTANCE OF BEING EARNEST), JASON GREEN (THE PRODUCERS) AND MACK AND MABEL. DAMIAN HAS LOVED REHEARSING WITH HIS FRIENDS AND HOPES YOU ENJOY THE SHOW.

## BRENDA & ED PARSLEY - CAT HILL & DAVE COLLIER

CAT IS A RELATIVE NEWCOMER TO MUSICALS, HER ROLE AS HODEL IN FIDDLER ON THE ROOF HAVING BEEN HER FIRST SHOW IN 2013. AFTER HAVING SUNG CHORAL MUSIC FOR MOST OF HER LIFE, CAT HAD A BRIEF FORAY INTO BARBERSHOP MUSIC, COMPETING WITH THE READING BARBERETTES IN THE 2007 NATIONAL BARBERSHOP FINALS. SHE JOINED CMP FOR THEIR CHRISTMAS SHOW IN 2011 AND HAS NEVER LOOKED BACK. SHE IS DELIGHTED TO BE PERFORMING IN THE WITCHES OF EASTWICK ALTHOUGH THE ROLE OF A GOSSIPING TOWNSWOMAN MIGHT NOT BE AS MUCH OF A CHALLENGE AS IT SHOULD.



DAVE'S FIRST ACTING ROLE, MORE YEARS AGO THAN HE WANTS TO REMEMBER, WAS AS THE JACKDAW OF RHEIMS, A THIEVING BIRD WHO PILFERS A CARDINAL'S RING AND GETS ROUNDLY CURSED FOR HIS PAINS. WHEN HE FINALLY REPENTS, HE IS MADE A SAINT. SUBSEQUENTLY, DAVE HAS PLAYED MANY ROLES OF VARYING DEGREES OF HOLINESS, RECENTLY RANGING FROM HARRY THE HORSE (IN CMP'S 2012 PRODUCTION OF GUYS AND DOLLS) TO THE FIRST POPE. AS THE WITCHES OF EASTWICK IS ONE OF HIS FAVOURITE MUSICALS, HE WAS DELIGHTED TO BE ABLE TO REVISIT THE ROLE OF REV ED. PROFESSIONALLY, DAVE IS AN AGILE SCRUM MASTER WITH HEWLETT-PACKARD, WHICH IS NOT AS ENERGETIC AS IT SOUNDS.



## GRETA & RAYMOND NEFF - DEBBIE MANN & PETER WINN



DEBBIE HAS BEEN A MEMBER OF CMP FOR MORE YEARS THAN SHE CARES TO MENTION (WELL 27!). IT HAS BEEN A DELIGHT TO PLAY GRETA NEFF, A TOWN GOSSIP WHO ON OCCASION GETS TO DANCE WITH THE DEVIL. SHE HOPES YOU ENJOY YOUR VISIT TO EASTWICK.

THIS IS PETER'S TENTH MAIN SHOW WITH CMP (APART FROM A WALK-ON PERFORMANCE AS A CO-OPTED WAITER IN THE BOYFRIEND). BY THE STANDARDS OF SOME OTHER CAST MEMBERS, HE IS STILL A RELATIVE NEWCOMER, BUT THE TEN YEARS HAVE SEEMED TO PASS VERY QUICKLY WITH THE QUALITY AND STANDARD OF PERFORMANCES IN WHICH

HE HAS BEEN PRIVILEGED TO TAKE PART. HIS PREVIOUS EXPERIENCE AS A US NAVY CAPTAIN, A SWASHBUCKLING PIRATE, A HOLLYWOOD VOICE COACH ETC PREPARED HIM NOT A JOT FOR HIS CURRENT ROLE AS A WITCH'S "BIT ON THE SIDE", A BORROWED MAN. HE HAS HOWEVER ENJOYED REHEARSING FOR THIS AND EVEN HIS RELATIONSHIP WITH HIS DOMINEERING STAGE WIFE, GRETA NEFF HAS BEEN INTERESTING. PETER HOPES THAT YOU WILL NOW JUST SIT BACK AND ENJOY CMP'S VENTURE INTO THE WEIRD WORLD OF EASTWICK'S NEW ENGLAND POPULATION AND THEIR RECENT ARRIVAL, THE NEW MASTER OF THE LENOX HOUSE

## BEHIND THE MAGIC

### RICHARD STOCKTON - MUSICAL DIRECTOR



DICK CLEARLY MADE SUCH A GOOD IMPRESSION CONDUCTING THE 1994 CMP PRODUCTION OF *HALF A SIXPENCE* THAT, TWENTY YEARS LATER, HE WAS INVITED BACK FOR ANOTHER GO. IT WAS THE SHOW WHERE HE MET HIS WIFE SUE PRIOR AND TONIGHT'S DIRECTOR MARK CONOLLY, BOTH OF WHOM WERE IN THE CAST. DICK IS PLEASED TO BE MD WITH CMP FOR *WITCHES OF EASTWICK*, AS IT IS A SHOW THAT HE HAS LOVED FOR MANY YEARS.

BORN IN THE WEST MIDLANDS, DICK MOVED TO LONDON TO STUDY PHYSICS AT IMPERIAL COLLEGE LATER GOING ON TO STUDY SINGING, CONDUCTING AND COMPOSITION AT THE ROYAL COLLEGE OF MUSIC AND

SUBSEQUENTLY POST-GRAD AT THE GUILDHALL SCHOOL OF MUSIC AND DRAMA. HE HAS SUNG WITH VARIOUS PROFESSIONAL CHAMBER CHOIRS SUCH AS THE BBC SINGERS AND THE JOHN MCCARTHY SINGERS AND HAS MADE MANY BROADCASTS AND RECORDINGS. HE HAS REGULARLY APPEARED AS MD FOR GROUPS IN LONDON, WOKING, GUILDFORD, BRACKNELL, READING AND IN HIS HOME TOWN OF CAMBERLEY WHERE HE IS A MUCH SOUGHT AFTER SINGING TEACHER. HE CONDUCTS REGULARLY IN THE INTERNATIONAL GILBERT AND SULLIVAN FESTIVAL AND IS CONSIDERED AN AUTHORITY ON THE MUSIC OF SULLIVAN.

RECENT MD CREDITS INCLUDE *FOLLIES*, *CALAMITY JANE*, *42ND STREET*, *STRIKE UP THE BAND*, *THE SOUND OF MUSIC*, *CRAZY FOR YOU*, *ANYTHING GOES*, *GUYS AND DOLLS* AND *OKLAHOMA!*

FUTURE PLANS INCLUDE PRODUCTIONS OF *THE KING AND I* AND *THE HOT MIKADO*.

IN HIS DAY JOB DICK WORKS AS A PROJECT AND PROGRAMME MANAGEMENT CONSULTANT.

## MARK CONOLLY – DIRECTOR



MARK JOINED CMP IN 1992, SINCE WHEN HE HAS PLAYED A NUMBER OF PRINCIPAL ROLES FOR BOTH US AND OUR NEIGHBOURING SOCIETY, EBOS. THESE INCLUDE THE MALE LEADS IN *MY FAIR LADY*, *KISS ME KATE*, *SOUTH PACIFIC*, *GUYS & DOLLS*, *42<sup>ND</sup> STREET* AND, LAST YEAR, THE ROLE OF TEVYE IN OUR PRODUCTION OF *FIDDLER ON THE ROOF*.

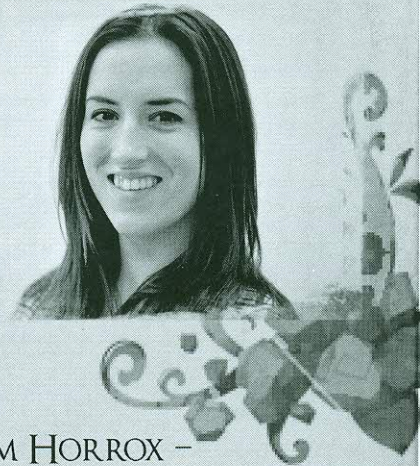
IN 2006, MARK MOVED INTO DIRECTING AND, *FIDDLER* APART, HAS DIRECTED ALL OUR WILDE SHOWS SINCE. AS OUR DIRECTOR HE CAN BE VERY LOUD, UNCOUTH AND SWEARS A LOT, YET INSISTS HE'S NOW CALMER. (*OLDER!*) MARK HOPES YOU ENJOY THE DARKLY-COMIC UNIQUENESS OF "*WITCHES*," WHICH IS BOTH FABULOUSLY INDISCREET, YET ULTIMATELY QUITE MORAL. "BE CAREFUL FOR WHAT YOU WISH FOR."

MARK IS NOW TAKING AN EXTENDED BREAK FROM CMP AND, ALTHOUGH THESE NAMES MAY BE UNKNOWN TO YOU, HE INSISTS ON TAKING THIS OPPORTUNITY TO THANK: MAGGIE UTTLEY, NICK AUSTIN, LUCY SEYMOUR, MARGERY JACKSON, JULIAN HIRST, PHAEDRA ASHFORD AND JOHN CALEY FOR THEIR POSITIVE INFLUENCE OVER THE LAST 21 YEARS – EVEN IF THEY DIDN'T REALISE IT! (*O!! MY LIST WAS FAR LONGER THAN THAT!*) TUFF TITTY, MARK, THAT'S YOUR LOT!

## ERIN HOPE PHARO – CHOREOGRAPHER

ERIN STARTED DANCING WHEN SHE WAS 6 YEARS OLD AT JAYNE A COLEMAN ACADEMY OF DANCE. ONCE SHE STOPPED DANCING, SHE WAS VERY PLEASED TO FIND AMATEUR DRAMATICS. SHE FIRST FOUND EBOS BUT VERY QUICKLY JOINED CMP. TAKING PART IN *OKLAHOMA* AND *CAROUSEL* SHE ENJOYED IT SO MUCH THAT SHE BECAME THEIR CHOREOGRAPHER.

ERIN HAS CHOREOGRAPHED *GUYS AND DOLLS*, *HELLO DOLLY!* AND *FIDDLER ON THE ROOF* WITH CMP. SHE HAS ALSO BEEN IN MANY SHOWS WITH EBOS INCLUDING *SWEET CHARITY*, *SWEENEY TODD* AND MOST RECENTLY *THE BEST LITTLE WHOREHOUSE IN TEXAS*.



## MICHAEL BRENKLEY – LIGHTING DESIGNER

TRAINED AT ROSE BRUFORD COLLEGE. RECENT SHOWS WORKED ON INCLUDE *HOW TO SUCCEED* (OCEAN YOUTH THEATRE), *BEST LITTLE WHOREHOUSE IN TEXAS* (EBOS), *FAWLTY TOWERS* (WILDE COMMUNITY THEATRE), *FIDDLER ON THE ROOF* (CMP), *MACK AND MABEL* (EBOS), *EUROBEAT* (SPT), *LES MISERABLES* (OCEAN YOUTH THEATRE), *THE GONDOLIERS* (EBOS), *HELLO DOLLY!* (CMP), *ISU EUROPEAN FIGURE SKATING CHAMPIONSHIPS* (SHEFFIELD), *LAMBCO LIGHTING* AS ASSISTANT LIGHTING DESIGNER), *BLUEBIRDS A NEW MUSICAL* (LAMBCO PRODUCTIONS), *THE GO! GO! GO! SHOW*; NATIONAL TOUR (THE SHOW4KIDS), *BILLY ELLIOT YOUTH THEATRE* (GOLDEN RATIO) AND *FOOTLOOSE THE MUSICAL*, *LONDON* MICHAEL ALSO WORKS FOR LOCAL DANCE SCHOOLS AND PRODUCERS; ALLIED SCHOOL FOR DANCE, BERZERK PRODUCTIONS, DANCE CONNECTIONS, DANCE SENSATIONS, LIMELIGHT, STRICTLY STREET AND STARLET DANCE. MICHAEL ALSO WORKS AS AN ASSOCIATE LIGHTING DESIGNER AND PROGRAMMER.

## TOM HORROX – SOUND DESIGNER

TOM STARTED IN THEATRE AGED 15, HELPING BACKSTAGE WITH CMP IN 1997. THIS LED TO HIM WORKING FOR LOTS OF LOCAL COMPANIES IN THE YEARS TO COME. HE MOVED IN TO SOUND IN 2004 AND WENT ON TO WORK PROFESSIONALLY ON TOURING SHOWS AND PANTOMIMES OVER THE NEXT DECADE. IN 2012 TOM FOUNDED MAYAN PRODUCTIONS AND HAS PRODUCED AND DIRECTED THREE SHOWS IN THAT TIME. MOST RECENTLY LAST YEAR TOM CO-DIRECTED *TICK... TICK... BOOM!!!*, AN AUTOBIOGRAPHICAL MUSICAL ABOUT THE LIFE OF JON LARSON, THE WRITER OF THE BROADWAY MUSICAL *RENT!* TOM IS VERY MUCH LOOKING FORWARD TO WORKING WITH CMP AGAIN AND KNOWS WITH ALL THE TALENT ON DISPLAY, YOU ARE IN FOR A REAL TREAT. MORE THINGS TO COME.