



The CMP production of

# GHOST

## THE MUSICAL

5 to 9 March 2024

The Wilde Theatre, South Hill Park





# The Cast & Rehearsal Photos



**Back row** L to R Damian Thomas-Da Rios, Mark Webb, Helen Muggeridge, Tony Collins, Mitchel Thorpe, Justin Ferrington, Nicola Miller, Sue Dyer, Heaven Kennedy, Jamie Milburn, Anthony Wilson, Peter Winn; **Middle row**, Tom Horrox, Debbie Ferrington, Natalie Heffer, Catherine Hazell, Natalie Akers, Rebecca Semark, Denise Pooler, Caroline Smees, Becky Adams, Alison Trice, Yazmin Lamden, Hannah Lebrecht, Steph Hewitt, Emma Greedus, Sarah Coward, Janet Winn, Nyck Moore; **Front row**, Hannah Coe, Amy Williams, Erin Hope Pharo, Holly Banasik



The Crowthorne Musical Players

Production of

# GHOST the Musical

Book & Lyrics by BRUCE JOEL RUBIN

Music & Lyrics by DAVE STEWART & GLEN BALLARD

Based on the Paramount Pictures film written by Bruce Joel Rubin

Original West End Production Produced by Colin Ingram, David Garfinkle, Adam Silberman,  
Land Line Productions, Donovan Mannato, Michael Edwards / Carole Winter

"Unchained Melody" written by Hy Zaret and Alex North, courtesy of Unchained Melody Publishing LLC

Orchestrations by David Abbinanti

“GHOST” is presented through special arrangement with, and all authorised performance materials  
are supplied by, Theatrical Rights Worldwide (TRW), [www.theatricalrights.co.uk](http://www.theatricalrights.co.uk)

Director: Tom Horrox; Musical Director: Mark Webb

Choreographers: Amy Williams & Erin Hope Pharo

Lighting Designer: Robert Henderson; Sound Designer: Tom Horrox

Costume Designer & Wardrobe: Janet Winn

Projection Design: Matthew Harcourt

**Crowthorne Musical Players are members of the National Operatic and Dramatic Association**



# Crowthorne Musical Players

Crowthorne Musical Players was formed in 1950 by members of the Parish Church. Since that time, CMP has performed many musical shows at various venues. Our first production here at the Wilde Theatre was in 1989.

## Main Shows

1950-1957	Concerts & Revues	1958	Babes in the Wood	1959	Dick Whittington
1960	Rhapsody in Blue	1961	The Sleeping Beauty	1962	Rock the Clock
1963	Princess Ju Ju	1964	Dick Whittington	1965	Bells of Bruges
1966	Paris in Spring	1967	The Geisha	1968	Gipsy Love
1969	Sweethearts	1970	Valley of Song	1971	No No Nanette
1972	Pantomime	1973	The Quaker Girl	1974	The Merry Widow
1975	The Arcadians	1976	The Gipsy Baron & Viva Mexico!	1977	Me and My Girl & The Sound of Music
1978	Orpheus in the Underworld	1979	White Horse Inn & My Fair Lady	1980	Camelot
1981	Sweeney Todd	1982	Fiddler on the Roof	1983	The Mikado
1984	Salad Days	1985	The Pajama Game	1986	Viva Mexico!
1987	The Sorcerer	1988	Kiss Me, Kate	1989	Showboat
1990	Ruddigore	1991	Calamity Jane	1992	The Merry Widow
1993	Oklahoma!	1994	Half a Sixpence	1995	Carousel
1996	Fiddler on the Roof	1997	Pirates of Penzance	1998	My Fair Lady
1999	Calamity Jane	2000	Anything Goes	2001	Kiss Me, Kate
2002	Die Fledermaus	2003	Me and My Girl	2004	The Boyfriend
2005	South Pacific	2006	Annie Get Your Gun	2007	Singin' in the Rain
2008	Oklahoma!	2009	Broadway Pirates of Penzance	2010	Carousel
2011	Guys & Dolls	2012	Hello, Dolly!	2013	Fiddler on the Roof
2014	The Witches of Eastwick	2015	The Addams Family	2016	Calamity Jane
2017	Made in Dagenham	2018	Sister Act	2019	9 to 5
2020	Kipps—The New Half A Sixpence Musical	2021	The Wedding Singer	2022	Curtain Up! Gala Concert
2023	The Little Mermaid				

## Officers

Chairman	Secretary	Treasurer
Janet Winn	Tom Horrox	Nyck Moore

## Life Members

Nick Austin, Chris Evans, Eileen Goode, Carol Hardy, Carole Kershaw, Claire Pinder, Reg & Sybil Priest, Maggie Uttley, Debbie Mann, Christine Charlton, Mark Conolly, Chrissy Pask, Sue Dyer

We meet for rehearsals on Thursday nights, plus Monday nights as required, at Crowthorne Parish Hall on Heath Hill Road, and we gratefully acknowledge the facilities and financial support provided by Crowthorne Parish Council.

For information about how to become involved with CMP, please contact us via our website, [www.cmp-berks.org.uk](http://www.cmp-berks.org.uk) or just come along to any rehearsal - we guarantee you a warm welcome.



## Chairman's Welcome



Welcome one and all to Crowthorne Musical Players production of Ghost the Musical.

I cannot believe that it is a year since we were performing The Little Mermaid on this stage. Ghost the Musical is so different, but in so many ways no different as it is packed full of amazing songs, wonderful characters, and a large chorus.

As ever you will see and hear from a wealth of talent who together bring the show to life. We once again are delighted to welcome new faces into our Society, joining our wonderful family of members, who love to sing, dance, and entertain you, the audience.

I would like to thank the Production Team for all their hard work in putting Ghost the Musical together, to produce this amazing show. CMP have had the pleasure of working with them all before and hope to do so again in the future, our Director Tom Horrox, Musical Director Mark Webb and Co-Choreographers Amy Williams and Erin Hope Pharo.

A deserved thank you to the Committee, Production Team and those who continue to work tirelessly for Crowthorne Musical Players in the months leading up to the show and to those working behind the scenes this week. As there are so many, it would be difficult to name them all, but I am grateful for all they have done and continue to do for us.

Thank you to Tony James, and the Management and Staff at South Hill Park.

Once again, Crowthorne Musical Players have an exciting programme of shows and events over the coming year. Many are mentioned in this programme, but they can also be found on our website, [www.cmp-berks.org.uk](http://www.cmp-berks.org.uk), so we will look forward to seeing you again soon.

Many of you will remember Ghost the film, the roller coaster of emotions, joy, sadness, funny moments and of course the iconic song Unchained Melody, the pottery wheel and Molly's dungarees. These and more will be brought to you in this performance, so, tissues at the ready, make yourself comfortable and enjoy the show!

Janet Winn – Chairman

## Synopsis

GHOST THE MUSICAL follows Sam and Molly, a young couple whose connection takes a shocking turn after Sam's untimely death. The bond of love transcends the boundaries of life itself to grow stronger and more fully realised. Trapped between two worlds, Sam refuses to leave Molly when he learns that her life is in grave danger from the machinations of Sam's panicking work colleague, Carl. Desperate to communicate with her, he turns to a storefront psychic, Oda Mae Brown, who helps him protect Molly and avenge his death. GHOST THE MUSICAL is a poignant romance that builds comedy, suspense, and deeply felt emotion to an ethereal climax that audiences will never forget.

## Future Shows

### A Culinary Cabaret

A MUSICAL MEDLEY TO TICKLE THE TASTEBUDS

FRIDAY 12 AND SATURDAY 13 JULY 2024

MORGAN CENTRE, CROWTHORNE

JOIN THE CAST!



### ONE NIGHT ONLY

Monday 23 September

Wilde Theatre, South Hill Park

Could you be our director?



### Annual Christmas Concert

SATURDAY 7 DECEMBER

&

SUNDAY 8 DECEMBER 2024  
(MATINEE PERFORMANCES)

CROWTHORNE PARISH HALL

### nickelodeon THE SPONGEBOB MUSICAL

W/C 2 MARCH 2025, WILDE THEATRE, SOUTH HILL PARK



THIS AMATEUR PRODUCTION OF THE SPONGEBOB MUSICAL IS PRESENTED  
BY ARRANGEMENT WITH CONCORD THEATRICALS  
[WWW.CONCORDTHEATRICALS.CO.UK](http://WWW.CONCORDTHEATRICALS.CO.UK)

## Production Team

Director	Tom Horrox
Musical Director	Mark Webb
Choreographers	Amy Williams & Erin Hope Pharo
Stage Manager	Rhi O’Keefe
Deputy Stage Manager	Flossie Plain
Lighting Design	Robert Henderson
Lighting Operator	Steve Davies
Follow Spots	Paul Boneham, Simon Light
Projection Design	Matthew Harcourt
Projection SFX Operator	Caroline Webb
Sound Designer	Tom Horrox
Sound Operator	Pete Ashton & Chris Nicholson
Properties	Peter Winn
Stage Design	Tom Horrox
Set Build	Simon Light
Costume Design and Wardrobe	Janet Winn
Show Week Props Assistant	Ellie Lusher & Olivia Hollidge
Backstage Crew	Chris Evans, Chris Wood, Ben Goldswain, Ella Pickard, Charlotte Hollidge
Front of House Organiser	Janet Winn
Flyer, Poster and Banner Design	Emily Boneham-Horrox
Logo Design	TRW (Europe)
Publicity	Emily Boneham-Horrox
Dress Rehearsal Photography	Mike Gribble
Programme	Peter Winn
Administration/Bookings	Janet Winn
Show Week Raffle	Janet Winn

The CMP cast and committee would also like to thank Royal Mail, Erica Turney, Catherine Hazell, Rebecca Semark and Space4U for storage; Andi Nichols, Anna Seymour, Paula Harris, Tony James and the Staff at SHP; our Front of House volunteers; Andrew Mitchell at The Crowthorne Methodist Church; Joanna Robertson and the staff at Crowthorne Parish Council; Miles & Daughters (Funeral Directors) Crowthorne; Michael Brenkley, Wayne Semark, Duncan Bruce, Sam & Roy Edwards

We would also like to thank everyone who has not been included because it was too late for the publishing deadline.

## Orchestra

Mark Webb	Keyboard 1	Jade Cuthbert	Violin
Tim Newbury	Keyboard 2	Gregor Spowart	Trumpet
Daniel Bilby	Guitar	Charlie Black	Acoustic Guitar
Alison Beavan	Cello	Sam Greenland	Drums
Tracy James	Reed	Adam Linnell	Bass





ARE YOU CURIOUS ABOUT...

# HOW MUCH YOUR HOME IS WORTH?

CONTACT US FOR A FREE PROPERTY VALUATION!

[frankschippers.co.uk](http://frankschippers.co.uk)



## Costumes and Wardrobe

After the amazing challenge of The Little Mermaid, everyone said Ghost should be a breeze to costume. True, there was not much to sew and there should be no budget overspend, but it still had its challenges. Sketch pad at the ready, my visions of how a few of the characters should look were drawn. Demons, shadows, and ghosts could make the show monochrome top heavy, so every opportunity to add a little glitz and colour was taken. I gave Oda Mae free license to be bold and out there and her two 'sisters' the opportunity to try and mimic her. New York streets deserved a colour splash and 'I'm Outta Here' a little bit of sparkle. Being able to make use of costumes from our extensive wardrobe, was a definite bonus. From Made in Dagenham, a white 60's dress, boots and Baker Boy hat and blue Ford boilersuits, (thank you Emily for beautifully sewing on my own bespoke 'Movers' patches to hide the Ford ones). Black jackets from The Wedding Singer's 'All About the Green' number, Nun's costumes, Monsignor's long coat, white boots and a New York Police shirt from Sister Act, anything white for the ghosts and a mix of bomber jackets plus many more, were all put into service. The Demons outfits and Mover patches were not the only thing I needed to make this year, look out for the orange chaise longue, as Sam says 'I mean, ever since I was a kid, I dreamed of a couch that was missing half of its backside', Oda Mae's tablecloth and chair cushion and scenery curtains.

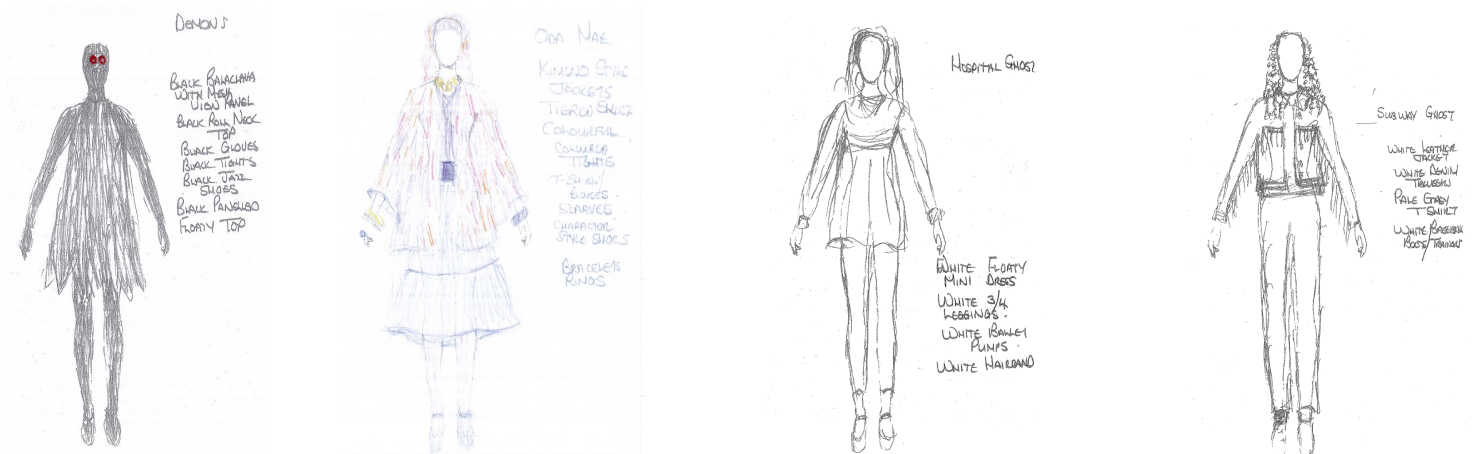
A thank you to the Cast for the costumes they have provided for themselves, this is such a great help.

Costume and Wardrobe can be a stressful job, but it is my pleasure and I love to see the end results, so I hope you, like me, like what you see too.

I can do no more, so apart from any wardrobe malfunctions show week, my job is done, please enjoy the show!

### Janet Winn – Costume Design and Wardrobe

Footnote: We hire out costumes, either whole sets or individual items. If you are putting on a production or need just a few pieces, please contact me through [www.cmp-berks.org.uk](http://www.cmp-berks.org.uk), I will be more than happy to discuss your needs.



## **Scenes & Musical Numbers**

Act 1

### **Scene 1 - Loft, night**

Here Right Now

*Molly & Sam*

Unchained Melody 1

*Sam*

### **Scene 2 - Wall Street**

More

*Carl & Ensemble*

### **Scene 3 - Bank**

More (cont'd)

*Carl & Ensemble*

### **Scene 4 - Café**

Three Little Words

*Sam & Molly*

### **Scene 5 - Deserted Street**

Three Little Words (cont'd)

*Sam & Molly*

Sam's Death & Higher Spirits

*Higher Spirits*

### **Scene 6 - Hospital Emergency Room**

You Gotta Let Go Now

*Hospital Ghost & Ensemble*

### **Scene 7 - Sam's Funeral**

You Gotta Let Go Now (cont'd)

*Hospital Ghost & Ensemble*

### **Scene 8 - Loft**

### **Scene 9 - Transition to Subway**

### **Scene 10 - Subway**

### **Scene 11 - Harlem Street/Willie Lopez's Apartment**

### **Scene 12 - Harlem Street**

### **Scene 13 - Oda Mae's Seance Parlour**

Are You A Believer?

*Oda Mae, Clara, Louise & Ensemble*

### **Scene 14 - Loft**

With You

*Molly*

### **Scene 15 - Brooklyn Street - Outside the Loft**

### **Scene 16 - Loft**

Suspend My Disbelief/I had A Life (Act 1 Finale—continues through to Scene 23)

*Molly, Sam, Carl & Ensemble*

### **Scene 17 - Café**

### **Scene 18 - New York Street**

### **Scene 19 - Willie's Apartment**

### **Scene 20 - Loft**

### **Scene 21 - Wall Street**

### **Scene 22 - Carl's Office**

### **Scene 23 - New York Panorama**

## **INTERVAL**



Act 2

**Scene 1 - Street In The Rain**

Act 2 Opening - Rain/Hold On  
*Molly & Ensemble*

**Scene 2 - Police Station**

**Scene 3 - Walk In The Rain**

Act 2 Opening - Rain/Hold On  
*Molly & Ensemble*

**Scene 4 - Loft, Late Afternoon**

Act 2 Opening - Rain/Hold On  
*Molly & Sam*

Recorded Unchained Melody (Radio)

Life Turns On A Dime  
*Molly, Sam & Carl*

**Scene 5 - Transition To Subway Station**

**Scene 6 - Subway Station**

Focus  
*Subway Ghost*

Talkin' 'Bout A Miracle  
*All Ghosts*

**Scene 7—Oda Mae's Seance Parlour**

Talkin' 'Bout A Miracle (cont'd)  
*All Ghosts*

**Scene 8 - Harlem Street**

**Scene 9 - Loft, Early Morning**

Nothing Stops Another Day  
*Molly*

**Scene 10 - Carl's Office/Molly's Loft**

Nothing Stops Another Day  
*Molly*

**Scene 11 - Bank Lobby**

**Scene 12 - Molly's Loft**

Nothing Stops Another Day  
*Molly*

**Scene 13 - Bank**

**Scene 14 - Bank**

Bank Sequence  
*Oda Mae & Ghost Chorus*

**Scene 15 - Carl's Office**

**Scene 16 - Bank**

**Scene 17 - The Bank Street Outside**

I'm Outta Here  
*Oda Mae, Ladies, Ensemble*

**Scene 18 - Loft**

Unchained Melody (Dance)  
*Molly & Sam*

Ascension (Act 2 Finale)  
*Sam*

**Bows & Playout**

*Company*

## Cast

Molly Jensen	Holly Banasik
Sam Wheat	Mitchel Thorpe
Carl Bruner	Damian Thomas-Da Rios
Willie Lopez	Justin Ferrington
Oda Mae Brown	Hannah Coe
Hospital Ghost	Caroline Smee
Subway Ghost	Heaven Kennedy
Louise	Rebecca Semark
Clara	Helen Muggeridge
Mrs Rosa Santiago	Alison Trice
Minister	Helen Muggeridge
Workman	Peter Winn
Det. Beiderman	Catherine Hazell
Officer Wallace	Peter Winn
Henry - A Ghost	Jamie Milburn
Ortisha	Hannah Lebrecht
Orlando - A Ghost	Anthony Wilson
Doctors and Medics	Jamie Milburn, Nicola Miller, Becky Adams, Emma Greedus
Bank Officer	Natalie Akers
Shirley Furgeson	Sue Dyer
Nuns & Priest	Yazmin Lamden, Steph Hewitt, Nyck Moore & Tony Collins
Waitress	Sarah Coward
Ghosts	Sue Dyer, Catherine Hazell, Natalie Akers, Yazmin Lamden
Ensemble of Passersby, Bystanders, Bums, House Move Supervisors, Café Customers	Alison Trice, Emma Greedus, Hannah Lebrecht, Natalie Akers, Nicola Miller, Nyck Moore, Sarah Coward, Peter Winn, Tony Collins
Principal Dancers	Debbie Ferrington, Denise Pooler, Natalie Heffer, Rebecca Semark
Body Doubles	Sam - Anthony Wilson; Willie - Jamie Milburn



## Sam Wheat - Mitchel Thorpe

Mitchel is delighted to be doing this third show with Crowthorne Musical Players. In preparation for this show Mitchel armed himself with a bedsheet and a desire for theatricality, he practiced his ghostly wails in front of a mirror and then went to the local park. Little did he know, his performance caught the attention of nearby dog walkers, who mistook him for a laundry enthusiast. Undeterred, Mitchel muttered to himself, "To boo or not to boo, that is the question!"

He then watched the film and realised that he had wasted 3 months.

His last few theatre performances have been:

Flight Lieutenant Teddy Graham in Flare Path, Wokingham Theatre. Prince Eric in The Little Mermaid, CMP. Matthew in Rules For Living, Wokingham Theatre. Gary in Slice of Saturday Night, EBOS. Bobby in The Boyfriend, EBOS. Eddie in Road, South Hill Park Studio Theatre. Glen Guglia in The Wedding Singer, CMP. Pompey in Measure for Measure, South Hill Park Studio Theatre.



## Molly Jensen - Holly Banasik

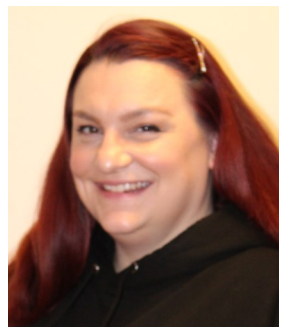
Ghost will be Holly's second production with CMP. Holly's musical credits include 'Holly' in The Wedding Singer with CMP, 'Audrey' in Little Shop of Horrors, 'Sarah' in Murder Ballad, 'Julia' in The Wedding Singer with Reading Ops, 'Mimi' in RENT, 'Penny Pingleton' in Hairspray, 'Bet' in Oliver!, 'Cosette' in Les Miserables, 'Christine' in The Phantom of the Opera and 'Peggy' in Godspell. As well as performing, Holly has previously assisted in directing, her most recent show was Chicago High School Edition with the Reading Starmaker youth group. Holly is extremely grateful to be back performing with CMP.



## Oda Mae Brown - Hannah Coe

Hannah has been performing in the local area for the past 12 years, having started performing at school and continuing all through university, and this is her third show with CMP. Past roles include Lucy The Slut (*Avenue Q*, 2019), Susan (*[title of show]*, 2014 and 2021) and Jenny (*Company*, 2016)

Hannah is thrilled to be taking on such an iconic role for this production of *Ghost*, and she has enjoyed the experience so much. Knowing Whoopi Goldberg won an Oscar for her portrayal of Oda Mae in the legendary film has provided a small amount of pressure, but Hannah has loved every second of the rehearsal process and can't wait to share her Oda Mae with the world. She wants to thank Tom, Mark, Erin and Amy for the amazing opportunity to bring her ideas to life and to have such a fun 5 months of rehearsals.



## **Carl Bruner - Damian Thomas-Da Rios**

This is Damian's twelfth 'Wilde' show with CMP, with previous roles including Sid (Kipps), Joe (9 to 5), Eddie (Sister Act), Francis Fryer (Calamity Jane), Barnaby Tucker (Hello, Dolly!), Cortina (Made in Dagenham). Other roles include Chip Tolentino (25<sup>th</sup> Annual Putnam County Spelling Bee), Man #1 (I Love You, You're Perfect, Now Change), Marcel (The Boy Friend) Rusty Charlie (Guys and Dolls), Herbert (Spamalot), Custus (Crazy For You), Young Buddy (Follies), Jon (Tick, Tick... BOOM), Seymour (Little Shop of Horrors), Mark (Rent), Anatoly (Chess), Steward (Into the Woods), Max Detweiler (The Sound of Music), Edsel (Best Little Whorehouse in Texas) and Michal (The Pillowman). Damian has loved every moment of working with such a talented cast, his friends, and playing such a different character in Carl – and hopes that you enjoy the show.



## **Willie Lopez - Justin Ferrington**

Justin has loved the opportunity to join the amazing cast of Ghost as Willie Lopez, enjoying the somewhat rare opportunity to play a villain.

More recently found behind the scenes as Stage Manager or as a budding Sound Designer and Operator, Justin is looking forward to being back on the boards after a 5 year hiatus and thinks he couldn't have picked a better cast to get back into the action with, especially when one of the dancers is his Wife!

With a rehearsal period completely filled with both laughter and tears (you know who you are!), Justin hopes you enjoy watching the show as much as we have enjoyed creating it.

Previous appearances include; Dick in 9 to 5, Sir Bedevere in Spamalot, Made in Dagenham, Chess, Doc Pierce in Calamity Jane, Crazy for You, Follies, The Addams Family, Witches of Eastwick, Fiddler on the Roof.



## **Hospital Ghost - Caroline Smee**

Caroline steps into the ethereal shoes of the Hospital Ghost, finding a certain affinity with the character's guiding and candid nature. Drawing from her rich tapestry of roles, from the spirited Katie Brown in "Calamity Jane" to the enigmatically dark Florinda in "Into the Woods," she eagerly embraces this new spectral journey.

With a repertoire spanning from the whimsical antics of the Keystone Cop in "Mack & Mabel" to the haunting allure of one of the Ancestors in CMP's "The Addams Family," Caroline's theatrical life mirrors the diverse characters she portrays.

As she channels the Hospital Ghost's duty of illuminating truths and shepherding souls, Caroline endeavours to infuse her performance with her trademark authenticity and candor. A trait that her friends insist is endearing – a notion she's come to accept with a spectral smile.



## **Subway Ghost - Heaven Kennedy**

Heaven joined CMP in 2022 for Disney's The Little Mermaid and has since appeared in our Summer show, Don't Reign On Our Parade. She has been performing since the age of two and recent roles include cameos and ensemble in the Shinfield Players' production of Our House and Anything Goes Theatre's production of American Idiot. She is now proud to add Subway Ghost as her first featured role ahead of her appearing as Audrey II in the Woodley Light Operatic Society production of Little Shop of Horrors in June.

Heaven has thoroughly enjoyed rehearsals for Ghost and is excited for you to see the end result.





## Production Team

### Director - Tom Horrox

Directing Ghost has been a challenging and hugely rewarding process for Tom. He saw the original West End version on his 30th birthday and was awestruck by the show. He never saw a scenario where this could be a show he would take part in, let alone direct! He has been incredibly lucky to have realised this dream with the company that began his love of theatre in the first place. Tom began working with CMP in 1997 and is heavily involved with the company at all levels. He has previously directed 'A Tribute to Sondheim' and 'The Wedding Singer'. Other director credits in musicals include 'Murder Ballad', 'tick, tick...BOOM!' and 'Saucy Jack and the Space Vixens'. Tom is incredibly proud that CMP have risen to the challenge of performing a show that is so emotionally driven, as well as being very technical and at times, hilarious! The two things he enjoys doing most as a director is making audiences laugh and cry. He very much hopes that CMP succeed in doing both of these this week and, if rehearsals are anything to go by, there shouldn't be a dry eye in the house or indeed on stage. Tom thanks you sincerely for supporting local theatre and hopes we see you again very soon.



### Choreographers

#### Amy Williams

This is Amy's 9th show with CMP, and 2nd as a choreographer, having choreographed 9 to 5 in 2019. Amy has worked with Erin as Dance Captain in 2 other CMP shows but is privileged and proud to be able to work together, this time in a Production Team role, with one of her best friends. It's been an amazing experience to work as a team together with Mark and Tom. Big thanks to the cast & crew of Ghost for all their patience and hard work.



#### Erin Hope Pharo

Erin joined CMP in 2007 and Ghost The Musical is the 12th show she has been involved in, with last year's The Little Mermaid being the first show where she was joined on stage by her eldest daughter Tahlia. This is Erin's 9th show to choreograph for CMP, having also choreographed for EBOS.

However, this is the first time she has co-choreographed and is absolutely delighted to be doing it with one of her best friends. The experience has been one of great joy and she is so proud of everything they've achieved together. The production team as a whole has worked so hard and Erin would like to thank them for everything. Thank you to all the cast for trusting in the process. The show is going to be spectacular.

Past credits include:- Sweet Charity as a dance hall hostess, Taddy Jo in The Best Little Whorehouse in Texas, young Lucy Barker in Sweeney Todd, represent Greece in Eurobeat and Patsy in Crazy for You (all with EBOS)

Past choreography credits include:- Guys and Dolls, The Addams Family, Made in Dagenham and Sister Act (with CMP) and The Wizard of Oz and Avenue Q (with EBOS)



### Musical Director — Mark Webb

Mark is thrilled to be working with Crowthorne Musical Players again and teaming up with this production team who he has worked with individually before but never together. Mark has previously been Musical Director with CMP for multiple shows such as The Little Mermaid, The Wedding Singer, Made In Dagenham and The Addams Family.

He has really enjoyed this rehearsal period and working with this amazingly talented cast. If they can make people feel emotions in a rehearsal hall with no costumes, lights or band, then you are in for a weepy ride.





Rhi O'Keefe

Stage Manager



Janet Winn

Costume Design  
& Wardrobe



Tom Horrox

Sound Designer



Simon Light

Set Build



Flossie Plain

DSM



Matthew Harcourt

Projection Designer



Robert Henderson

Lighting Designer

*noda*

Be inspired by amateur theatre

## National Operatic and Dramatic Association

Headquarters: 15 The Metro Centre, Peterborough, PE2 7UH

Telephone: 01733 374790 Email: [info@noda.org.uk](mailto:info@noda.org.uk)

Website: [www.noda.org.uk](http://www.noda.org.uk)



Affiliated to the  
National Operatic and  
Dramatic Association

The National Operatic and Dramatic Association (NODA), founded in 1899, is the leading representative body for amateur theatre in the UK. The Association has a membership of approximately 2000 amateur theatre groups and approximately 800 individual members staging musicals, operas, plays, concerts and pantomimes in a wide variety of venues ranging from the country's leading professional theatres to village halls. Covering a broad spectrum of age ranges. NODA member societies meet the needs of all levels of both performers, whether dramatic, dance or musical, and those involved backstage, front of house or in society administration



# YOUR *personal* TRAVEL EXPERT



## EXPLORE. EXPERIENCE. *discover*

Explore the world, experience everything and discover new and exciting places. At Not Just Travel, it's our job to make your travel dreams a reality; we offer you a bespoke and tailored service that saves you time and takes the stress out of booking online.



Toria McMahon  
**PERSONAL TRAVEL CONSULTANT**

07490 162435  
toria.mcmahon@notjusttravel.com  
<https://victoriadmcmahon.notjusttravel.com>



**Computer system repair and support. Microsoft 365 Business Specialists. New laptops, desktops and servers. IP-PBX, VoIP solutions and business telephony. 1000's of cables, for video, networking, power etc. Wireless networks and high speed internet provision specialists. Mac and PC upgrades implemented daily. Serving the South East for over 16 years.**

**Our standard hourly rate is £60 per hour + VAT, and we cap most work at a maximum one hour, even if it takes many hours to resolve the issues. If a job only takes ten minutes, then often we don't raise an invoice for it. We're often working a dozen issues at once, which is how we can be so fair on billing.**

**We are looking forward to meeting you.**

**11-13 Dukes Ride, Crowthorne, Berkshire, RG45 6LZ (opposite the free carpark on New Road).**

**t. 01344 769090 e. [help@sibit.co.uk](mailto:help@sibit.co.uk) w. <http://sibit.co.uk>**

## Props

It is certainly a relief to be operating in a show set in the current time from the point of view of props. There is no need to manufacture dated items or simulate old newspapers etc. Day to day items such as smartphones, laptops etc are readily available, and as with costumes, in many cases are already in the possession of the cast. A bit of creativity was possible in Sam and Carl's place of work as nowhere does it identify the bank in question. So, since a lot of the action takes place in central New York, *Chase* Manhattan seemed a suitable possibility.

The Barbarella poster was a flashback to my youth. Images of Jane Fonda in space suits leaving little to the imagination of the young men of the 60s showed why Sam considered it to be vintage, and "... it goes with me". Milo O'Shea's character in the film, Dr Durand-Durand later became the origin of John Taylor and Nick Rhodes' new band Duran Duran, but I digress.

As usual, Google came up trumps with imagery of NYC taxi receipts, café bills and pricing all of which feature in smaller show props. Our trusty blank stage gun put in another appearance, justifying the capital outlay made a few years back.

One of the largest outlays for the show was the purchase of the potter's wheel which features in the show and particularly in the iconic Molly and Sam's ghost scene. This encouraged Holly to undertake her own throw-down training and she may yet produce some usable items throughout the show run. Rumour has it that the wheel may be up for sale after our show finishes.

The accident scenes requiring American medics to attend provided a bit of an issue for costume and props as the emergency services in the US differ from the well known green uniforms in England being instead, dark blue or black with quite different badges. Emergency bags differ also in being orange not green, but did prove to be available here in the UK.

I hope you will enjoy this show, and I am already looking forward to the challenges of properties for our next show, *The Spongebob Musical*.



## Peter Winn—Props

### WILDE THEATRE: IMPORTANT NOTICE

NO SMOKING IN THE AUDITORIUM

**PHOTOGRAPHY AND RECORDING OF PERFORMANCES ARE FORBIDDEN**

PLEASE SWITCH OFF ALL MOBILE PHONES AND WATCH ALARMS

The public may leave at the end of the performance by all exit doors and all the doors at the time must be open. All gangways, corridors and external passageways intended for exit must be kept entirely free from obstruction whether permanent or temporary. Persons shall not be permitted to stand or sit in any gangways intersecting the seating, or to sit in any of the other gangways, other than those designated for standing room.

South Hill Park is financially supported by Bracknell Forest Borough Council.



# WWW.FRIGHTNIGHTS.CO.UK

## 25TH ANNIVERSARY



**JOINS US AT THESE AMAZING HAUNTED  
LOCATIONS ACROSS THE COUNTRY**



**TO BOOK CALL US ON 07359225158**

# FRIGHT NIGHTS

*The Original Ghost Hunting Company Est. 1999*

*Bringing you Ghost Hunts at Britain's Most Haunted Locations*



# KABIRS

**TANDOORI RESTAURANT**



**10% DISCOUNT**  
ON TAKE AWAYS OVER £10  
(Collection Only)

## **OPENING TIMES**

LUNCH TIMES: 12.00PM - 2.00PM

EVENING: MONDAY - SATURDAY 6.00PM - 11.00PM

SUNDAY 6.00PM - 10.00PM

**TEL: 01344 777214 / 776522**

1-3 DUKES RIDE, CROWTHORNE, BERKSHIRE, RG45 6LZ





# The Crooked Billet

PUBLIC HOUSE AND RESTAURANT



Open 12pm - 11pm  
Food Served 12pm - 9.30pm  
Every Day

HONEY HILL  
WOKINGHAM  
RG40 3BJ  
TEL - 0118 978 0438

[WWW.CROOKEDBILLETWOKINGHAM.CO.UK](http://WWW.CROOKEDBILLETWOKINGHAM.CO.UK)